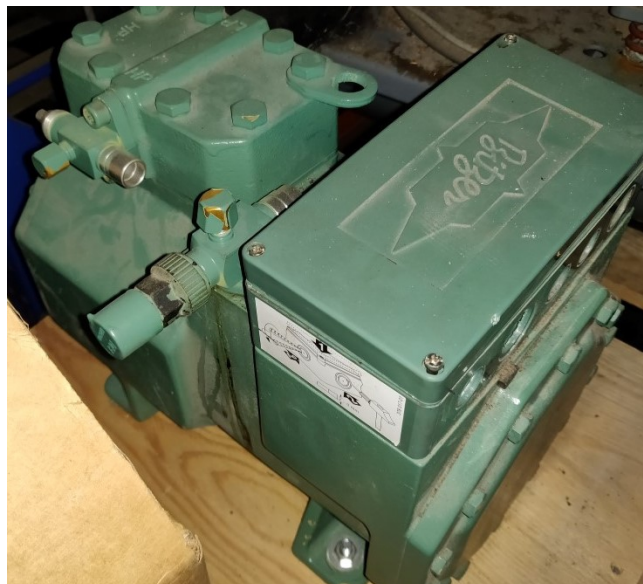


Bitzer 2FES-3Y-40S

Specifications

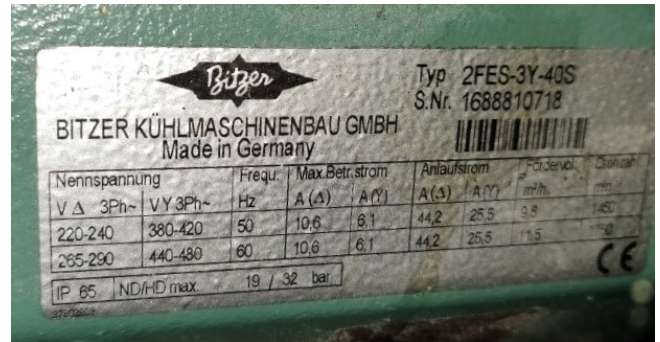
Marca	Bitzer
Tipo	2FES-3Y-40S
Refrigerante	Freon
kW at 0°C/+40°C	7.1
kW at -5°C/+40°C	5.9
kW at -10°C/+40°C	4.8
kW at -20°C/+40°C	3.1
kW at -30°C/+40°C	1.8
kW at -40°C/+40°C	0.9
Stock	1



Description

Used Bitzer 2FES-3Y-40S

Used Bitzer 2FES-3Y-40S Semi-hermetic Reciprocating Compressor. Our capacity table is based on the used type of Freon. You can also use these compressors on alternative types of Freon. For all the other specs (if available), see the picture of the manufacturer model plate or the attached pdf file. *Why choose for HOSBV? We are not only the largest used refrigeration specialist in Europe, but also, we deliver all equipment including an extensive test, warranty and industrial cleaning. *Optional we can also arrange the logistics.



Selection: Semi-hermetic Reciprocating Compressors

Input Values

Compressor model	2FES-3Y	Suction gas temperature	20,00 °C
Mode	Refrigeration and Air conditioning	Operating mode	Auto
Refrigerant	R404A	Power supply	400V-3-50Hz
Reference temperature	Dew point temp.	Capacity control	100%
Liq. subc. (in condenser)	0 K	Useful superheat	100%

Result

Q [W]	Cooling capacity	COP [-]	COP/IEER
Q _{ev} [W]	Evaporator capacity	m [kg/h]	Mass flow
P [kW]	Power input	Op.	Operating mode
I [A]	Current	th [°C]	Discharge gas temp. w/o cooling
Q _c [W]	Condenser Capacity (w. HX)		

t _c	t _o	5°C	0°C	-5°C	-10°C	-15°C	-20°C	-25°C	-30°C
30°C	Q [W]	10324	8636	7169	5897	4796	3846	3031	2335
	Q _{ev} [W]	10324	8636	7169	5897	4796	3846	3031	2335
	P [kW]	2.03	2.00	1.95	1.86	1.76	1.63	1.49	1.34
	I [A]	4.01	3.97	3.91	3.82	3.70	3.57	3.42	3.27
	Q _c [W]	12254	10538	9018	7667	6467	5399	4449	3606
	COP [-]	5.08	4.31	3.68	3.16	2.73	2.35	2.03	1.74
	m [kg/h]	266	220	180.1	146.7	118.3	94.2	73.8	56.6
	Op.	Standard	Standard	Standard	Standard	Standard	Standard	Standard	Standard
	th [°C]	57.6	64.2	71.2	78.8	87.1	96.3	106.6	118.6
	th [°C]	57.6	64.2	71.2	78.8	87.1	96.3	106.6	118.6
40°C	Q [W]	8562	7156	5930	4862	3936	3134	2445	1855
	Q _{ev} [W]	8562	7156	5930	4862	3936	3134	2445	1855
	P [kW]	2.46	2.37	2.25	2.10	1.94	1.77	1.58	1.38
	I [A]	4.54	4.42	4.27	4.10	3.91	3.71	3.51	3.31
	Q _c [W]	10901	9405	8064	6862	5762	4812	3943	3164
	COP [-]	3.48	3.02	2.64	2.31	2.03	1.77	1.55	1.35
	m [kg/h]	250	205	167.9	136.1	109.1	86.2	66.8	50.4
	Op.	Standard	Standard	Standard	Standard	Standard	Standard	Standard	Standard
	th [°C]	69.9	76.7	84.0	91.8	100.4	109.9	120.7	133.3
	th [°C]	69.9	76.7	84.0	91.8	100.4	109.9	120.7	133.3
50°C	Q [W]	6892	5755	4758	3886	3126	2467	1898	1410
	Q _{ev} [W]	6892	5755	4758	3886	3126	2467	1898	1410
	P [kW]	2.88	2.72	2.53	2.33	2.11	1.88	1.64	1.40
	I [A]	5.08	4.87	4.63	4.37	4.10	3.83	3.57	3.33
	Q _c [W]	9628	8336	7164	6099	5131	4253	3458	2738
	COP [-]	2.39	2.12	1.88	1.67	1.48	1.31	1.16	1.01
	m [kg/h]	234	191.7	156.1	125.8	100.1	78.3	59.8	44.1
	Op.	Standard	Standard	Standard	Standard	Standard	Standard	Standard	Standard
	th [°C]	82.9	90.0	97.6	105.8	114.8	124.8	136.3	0
	th [°C]	82.9	90.0	97.6	105.8	114.8	124.8	136.3	0

— No calculation possible (see message in single point selection)
 *According to EN12900 (20°C suction gas temp., 0K liquid subcooling)

Application Limits 100% 2FES-3